



# **DIGITAL REPOSITORY PLATFORM**

## **SAMVERA**

**Group 2:**



**Christian Derf C. Macalinao**

**Angelica C. Roncales**

**Khyzmette Jane Avelino**

**Imma J. Bedionita**

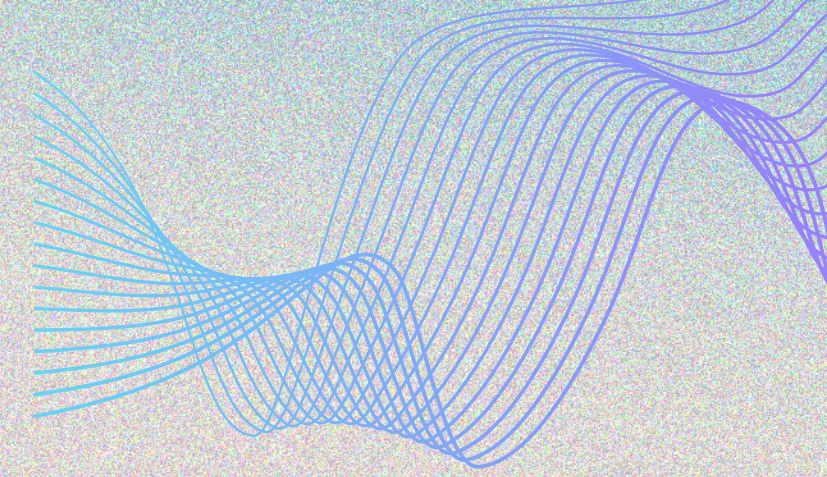
**Lixcelle Gaso**

**Liezel Gañolon Mohillo**





# CONTENTS





# EXAMPLE OF USE

- Samvera is primarily used in libraries and digital repositories. It was originally developed to make use of metadata defined by the Library of Congress Metadata Object Description Schema (MODS) Standard
- Samvera implements the Opinionated metadata gem to create domain-specific languages out of complex XML standards such as MODS.





# EXAMPLE OF USE

The core uses of Samvera are to provide a platform for:

## 1. Digital Preservation and Long-Term Storage

- a. Archiving Diverse Content
- b. Creating a Durable Home

## 2. Scholarly and Institutional Repositories (IRs)

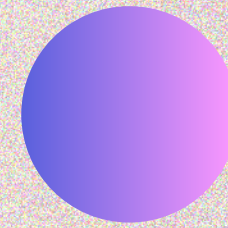
- a. Managing Institutional Output
- b. Content Includes
- c. Self-Deposit

## 3. Special Collections and Cultural Heritage

- a. Digital Collections
- b. Advanced Viewing
- c. Audio/Video Streaming

## 4. Custom Digital Collection Development

- a. Flexible Framework
- b. Multiple Interfaces





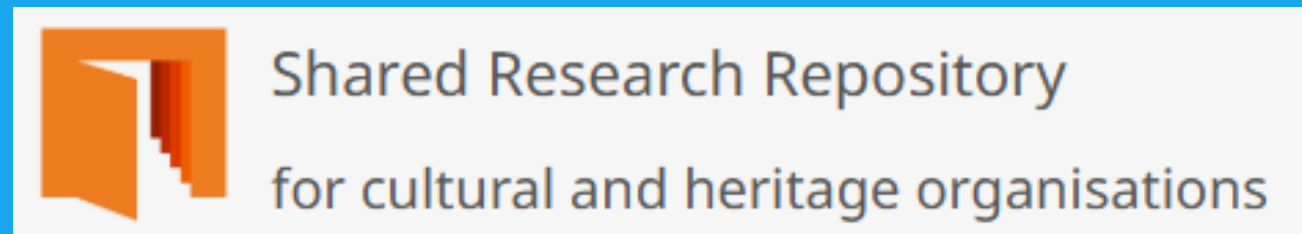
# EXAMPLES OF SAMVERA COMMUNITY REPOSITORY SOLUTIONS IN ACTION

## 1. ATLA Digital Library



- <https://dl.atla.com/>
- Atla Digital Library provides Atla members and other organizations with access to aggregated theological library collections from across the US.

## 2. British Library Shared Research Repository



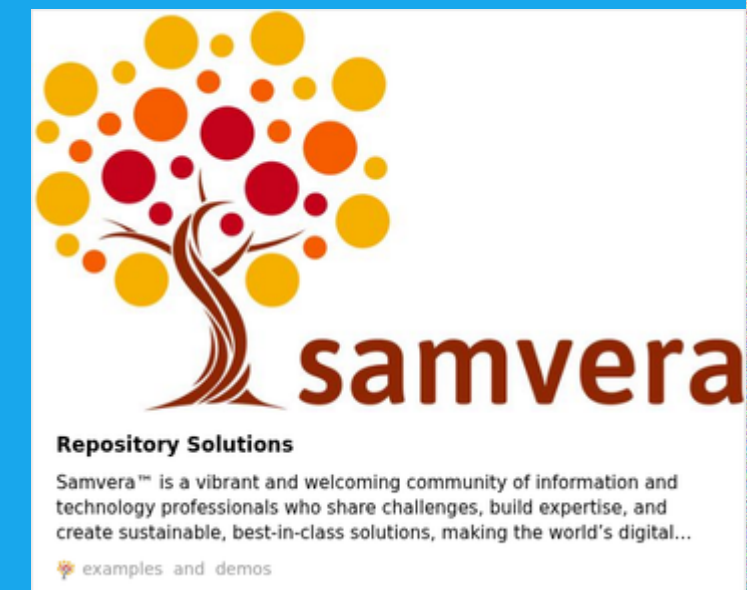
- <https://iro.bl.uk/>
- Institutional repositories for UK cultural heritage organisations, currently all Independent Research Organisations (IROs).
- Content includes a variety of outputs including published works, datasets, 3D models and exhibition material. Six individual repositories with a unified search layer over the top.



## 3. Carolina Digital Repository (CDR)



- <https://cdr.lib.unc.edu/>
- Institutional Repository for OA articles, journals, student papers, research data, posters, 3d objects, OER and more.





# EXAMPLES OF SAMVERA COMMUNITY REPOSITORY SOLUTIONS IN ACTION

- Cincinnati University - Scholar@UC
- Cornell University - Southeast Asia Visions
- Didómena -
- Digital Commonwealth
- The Digital Repository of Ireland
- Duke University Digital Repository
- Duke University Research Data Repository
- Emory University - Emory Electronic Theses and Dissertations (ETD)
- George Washington University Libraries
- Indiana University - Imago
- Indiana University - Media Collections Online
- Indiana University - Pages Online
- King's Fund Digital Archive
- Linn-Benton Community College Community Archive
- MAE, Theater Institute of Barcelona
- Northeastern University Repository
- Northwestern University AVR
- Northwestern University Digital Collections
- Northwestern University Institutional Repository - ARCH
- Oregon State University - ScholarsArchive@OSU
- Oregon State University - Oregon Digital
- Princeton University Library - Figgy
- Tufts University Digital Library
- University of Alberta Education & Research Archive
- UCLA Library Digital Collections
- University of California Santa Barbara Alexandria Digital Research Library
- University of Hong Kong Libraries Digital Repository
- The University of Hull's digital repository
- University of Michigan - Deep Blue Data
- University of Michigan - Fulcrum
- University of Utah - The Hive
- University of Virginia - Libra
- University of Virginia - Virgo GIS



Source; <https://samvera.org/repository-solutions/examples-and-demos>

